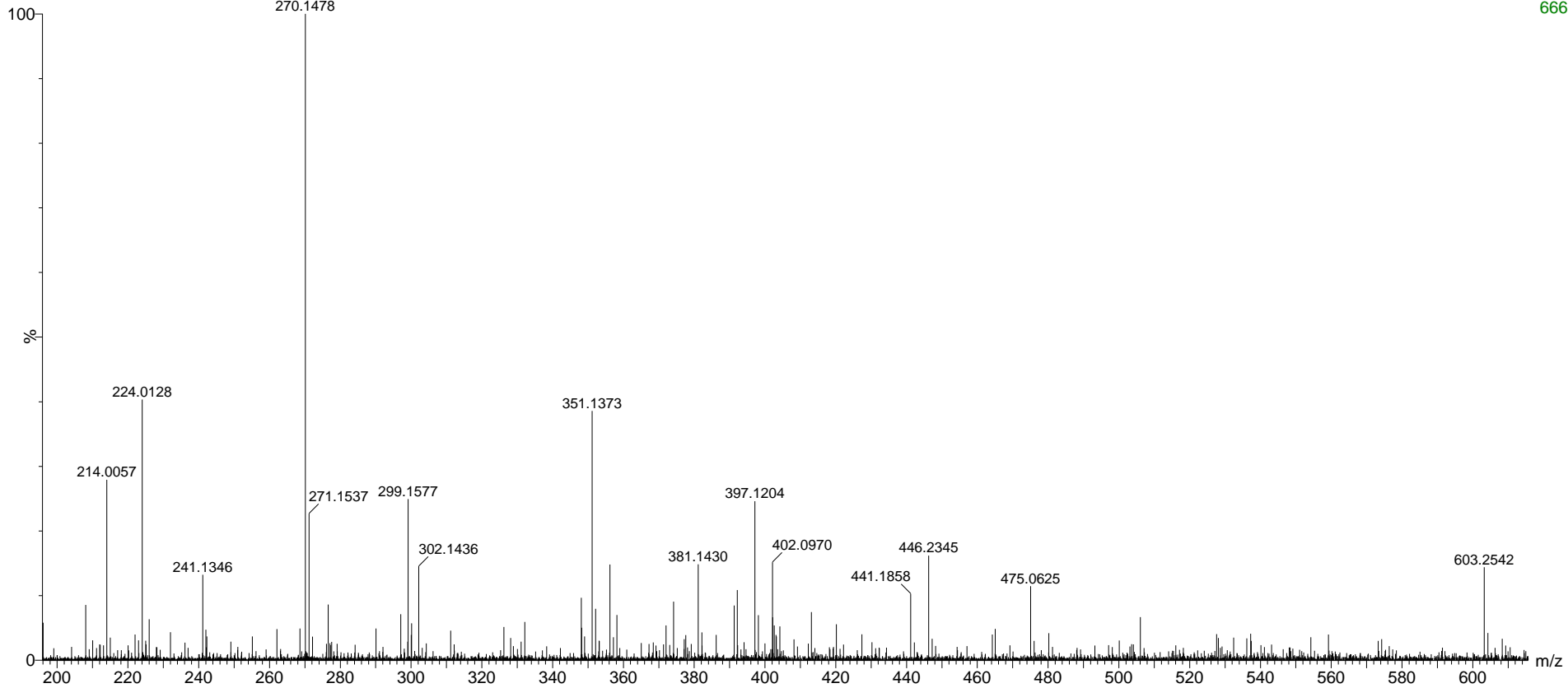


OLS2-041
OLS2-041 8 (0.191)

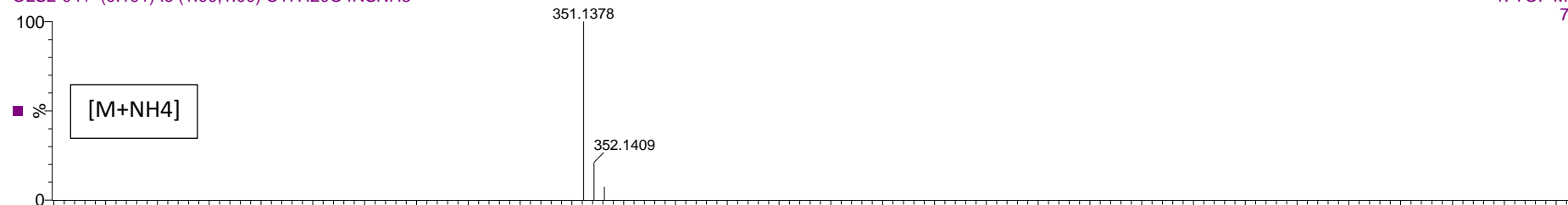
1: TOF MS ES+
666



OLS2-041

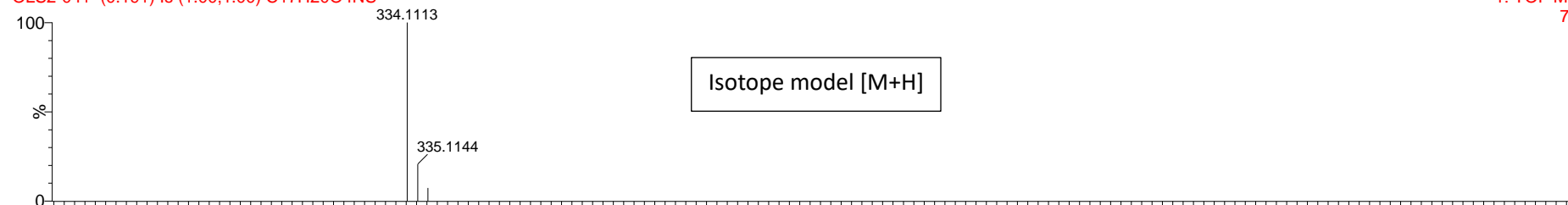
OLS2-041 (0.191) Is (1.00,1.00) C₁₇H₂₀O₄NSNH₃

1: TOF MS ES+
7.71e12



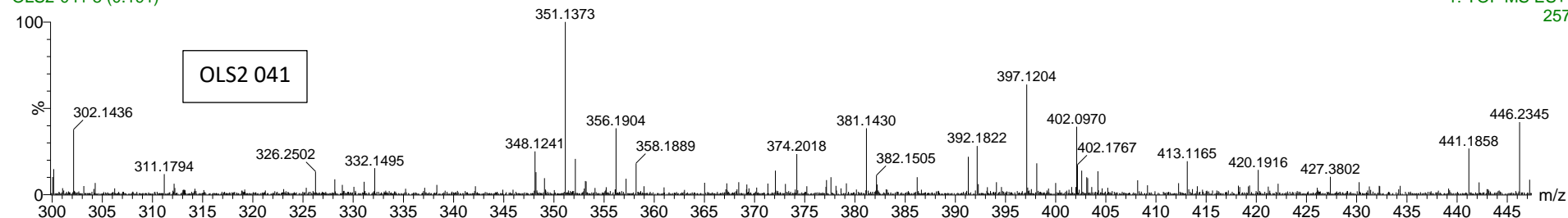
OLS2-041 (0.191) Is (1.00,1.00) C₁₇H₂₀O₄NS

1: TOF MS ES+
7.75e12



OLS2-041 8 (0.191)

1: TOF MS ES+
257



Elemental Composition Report for 351m/z.

Single Mass Analysis

Tolerance = 5.0 PPM / DBE: min = -1.5, max = 50.0

Selected filters: None

Monoisotopic Mass, Even Electron Ions

216 formula(e) evaluated with 1 results within limits (up to 50 best isotopic matches for each mass)

Elements Used:

C: 17-17 H: 0-50 N: 0-10 O: 1-10 S: 0-1

Minimum: -1.5

Maximum: 5.0 5.0 50.0

Mass	Calc. Mass	mDa	PPM	DBE	i-FIT	Formula
351.1373	351.1379	-0.6	-1.7	7.5	0.1	C17 H23 N2 O4 S